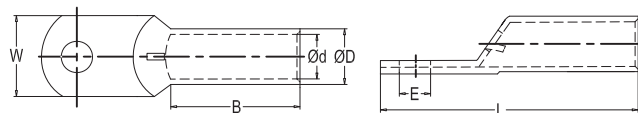


## RCCN 日成DTS型铜管端子 DTS Copper Ture Terminals



型号 Item No.	尺寸 DIMENSION					
	E	D $\phi$	d $\phi$	W	B	L
DTS16-6	7.0	9.0	6.0	13.0	15.0	40.0
DTS25-6	7.0	10.0	7.0	15.0	20.0	45.0
DTS35-6	7.0	11.0	8.0	16.0	23.0	50.0
DTS50-8	9.0	13.0	10.0	18.7	23.0	55.0
DTS70-8	9.0	15.0	11.0	21.5	26.0	60.0
DTS95-10	11.0	18.0	13.0	25.0	28.0	65.0
DTS120-12	13.0	20.0	15.0	28.8	33.0	75.0
DTS150-12	13.0	22.0	16.0	31.5	40.0	85.0
DTS185-16	17.0	25.0	19.0	36.0	47.0	95.0
DTS240-16	17.0	27.0	21.0	40.0	50.0	105.0
DTS300-20	21.0	30.0	23.0	43.5	55.0	115.0
DTS400-20	21.0	34.0	26.0	49.0	60.0	130.0



## RCCN 日成C45铜管端子 C45 Copper Ture Terminals



型号 Item No.	尺寸 DIMENSION			
	D $\phi$	d $\phi$	W	L
C45-4	5.0	3.0	6.6	24.0
C45-6	5.9	3.9	7.0	28.0
C45-10	6.9	4.9	7.0	28.0
C45-16	8.1	5.9	7.0	31.0
C45-25	10.0	7.3	7.0	33.0
C45-35	11.2	8.4	7.0	39.0
C45-50	12.5	9.5	7.0	45.0
C45-70	14.7	11.2	7.0	50.0

